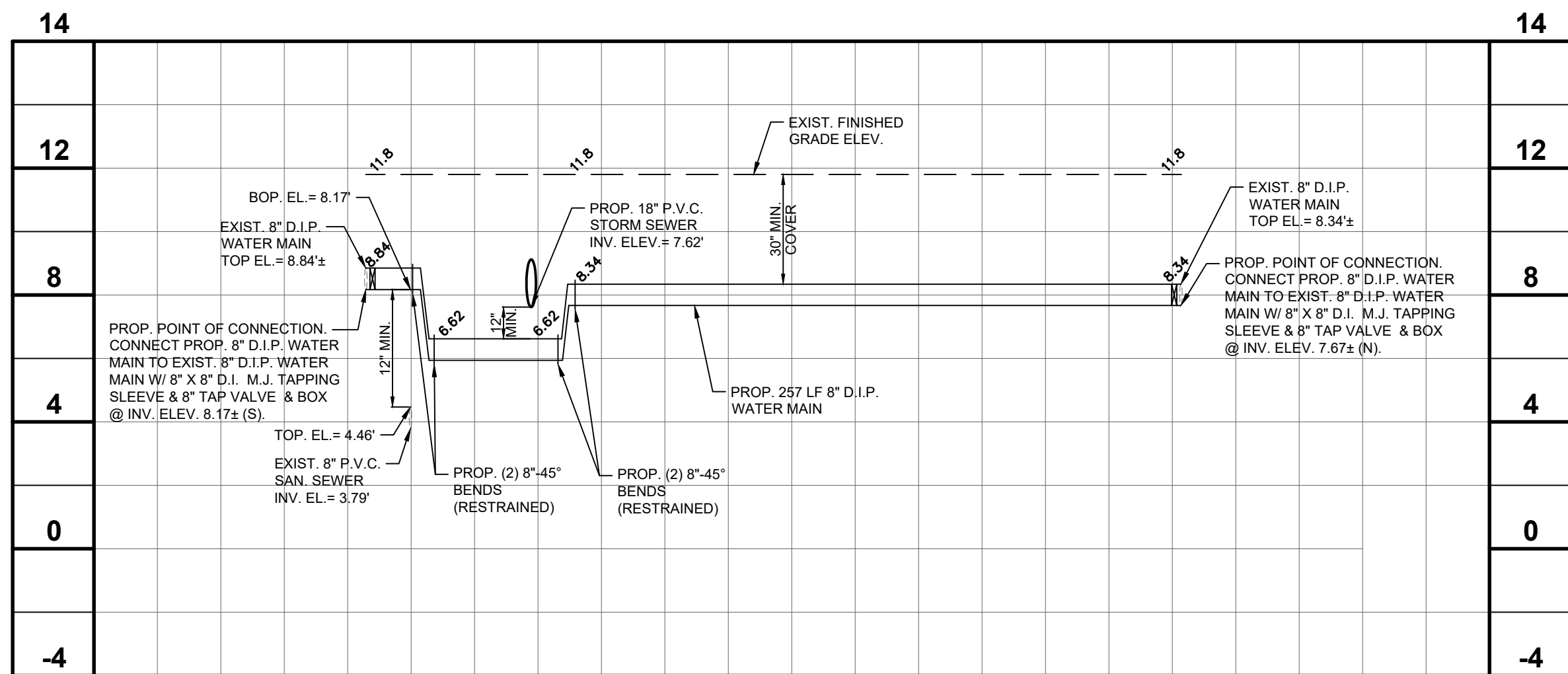


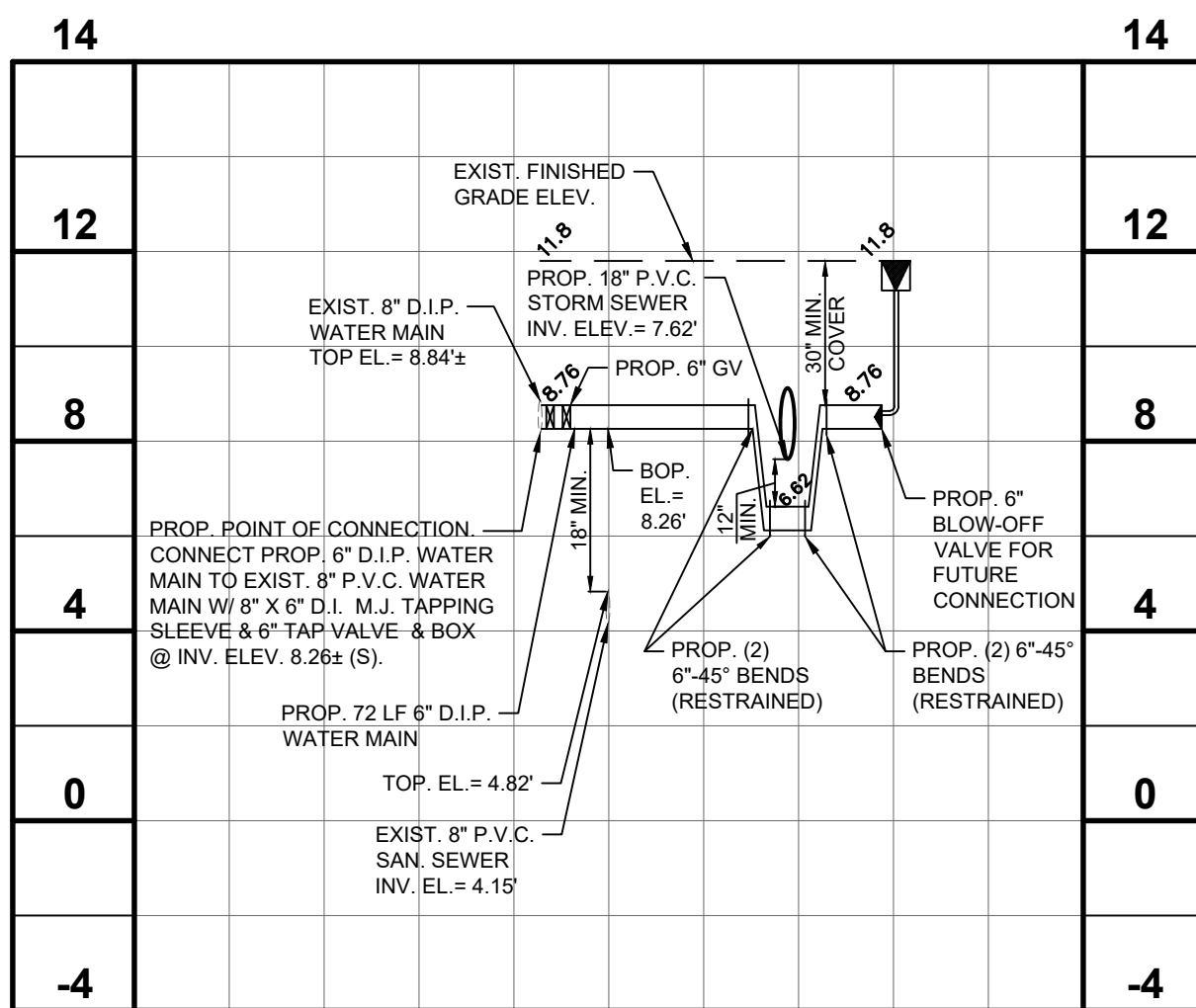
PROP. 8" SAN. SEWER PROFILE
(REFER TO SHEET C-10.1)

HORIZONTAL: 1" = 40'
VERTICAL: 1" = 4'



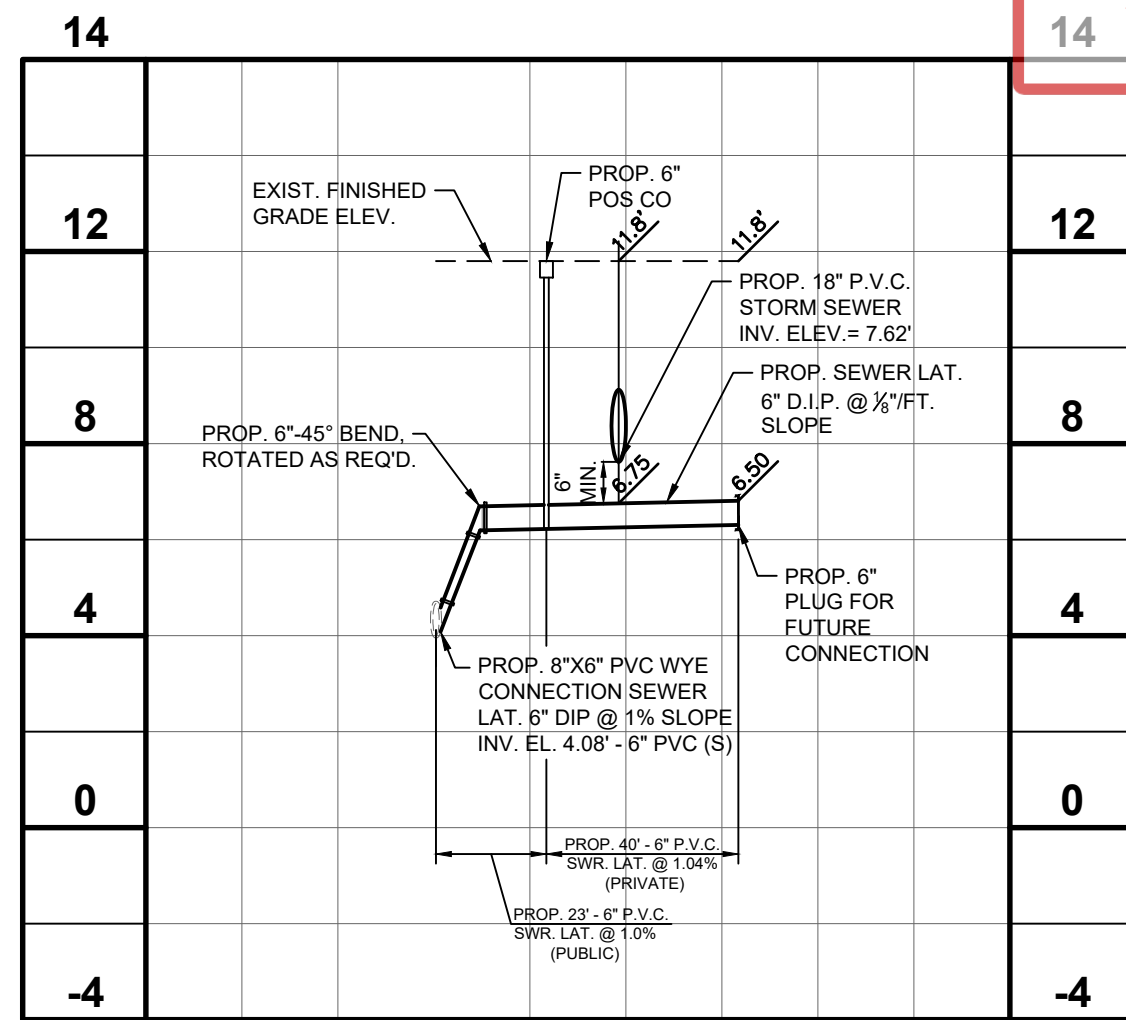
PROP. 8" WATER MAIN PROFILE
(REFER TO SHEET C-10.1)

HORIZONTAL: 1" = 40'
VERTICAL: 1" = 4'



PROP. 6" WATER MAIN PROFILE
(REFER TO SHEET C-10.1)

HORIZONTAL: 1" = 40'
VERTICAL: 1" = 4'



PROP. 6" SEWER LAT. PROFILE
(REFER TO SHEET C-10.1)

HORIZONTAL: 1" = 40'
VERTICAL: 1" = 4'

NOTE

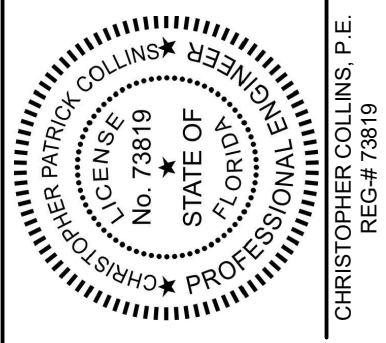
ELEVATIONS AS SHOWN WERE CONVERTED FROM THE NATIONAL GEOGETIC VERTICAL DATUM OF 1929 (NGVD 29) TO THE NORTH AMERICAN VERTICAL DATUM (NAVD 88) USING THE FOLLOWING CONVERSION: NGVD 29 VERTICAL DATUM (IN FEET) - 1.56' = NAVD 88 VERTICAL DATUM. THE CONVERSION FACTOR WAS OBTAINED FROM THE NATIONAL GEODETIC SURVEY WEBSITE ORTHOMETRIC HEIGHT CONVERSION PROGRAM USING THE LATITUDE AND LONGITUDE OF THE PROJECT LOCATION TO DETERMINE A CONVERSION FACTOR FOR THIS SPECIFIC LOCATION.

NOTE

THE MINIMUM COVER DEPTHS REQUIRED FOR PVC AND DIP SEWER MAINS ARE RESPECTIVELY 36 AND 30 INCHES.



10800 BISCAYNE BLVD.
SUITE 935
MIAMI, FL 33161
Phone: 305.720.2079
C.O.A. 33221



This item has been digitally signed and sealed by Christopher P. Collins, P.E. on the date adjacent to the seal.
Printed copies of this document are not considered signed and sealed and the signature must be verified on any electronics copies.

Revision	▲	Date
Comment		
Revision	▲	Date
Comment		
Revision	▲	Date
Comment		
Revision	▲	Date
Comment		
Revision	▲	Date 09/26/2022
Comment		
WWS DESIGN REVIEW 09.19.2022		
Revision	▲	Date 09/06/2022
Comment		
WWS DESIGN REVIEW 08.22.2022		
Designed by:	C.P.C.	
Drawn by:	A.T.S.	
Checked by:	C.P.C.	
Approved by:	C.P.C.	
Scale:	AS SHOWN	
Date:	08/22/2022	
Job No.:	I002	
© 2025		
Plans for		
FESTIVAL MARKETPLACE		
2900 W SAMPLE ROAD POMPANO BEACH, FLORIDA		
WATER & SEWER PROFILES		
Sheet No.		

C-10.2